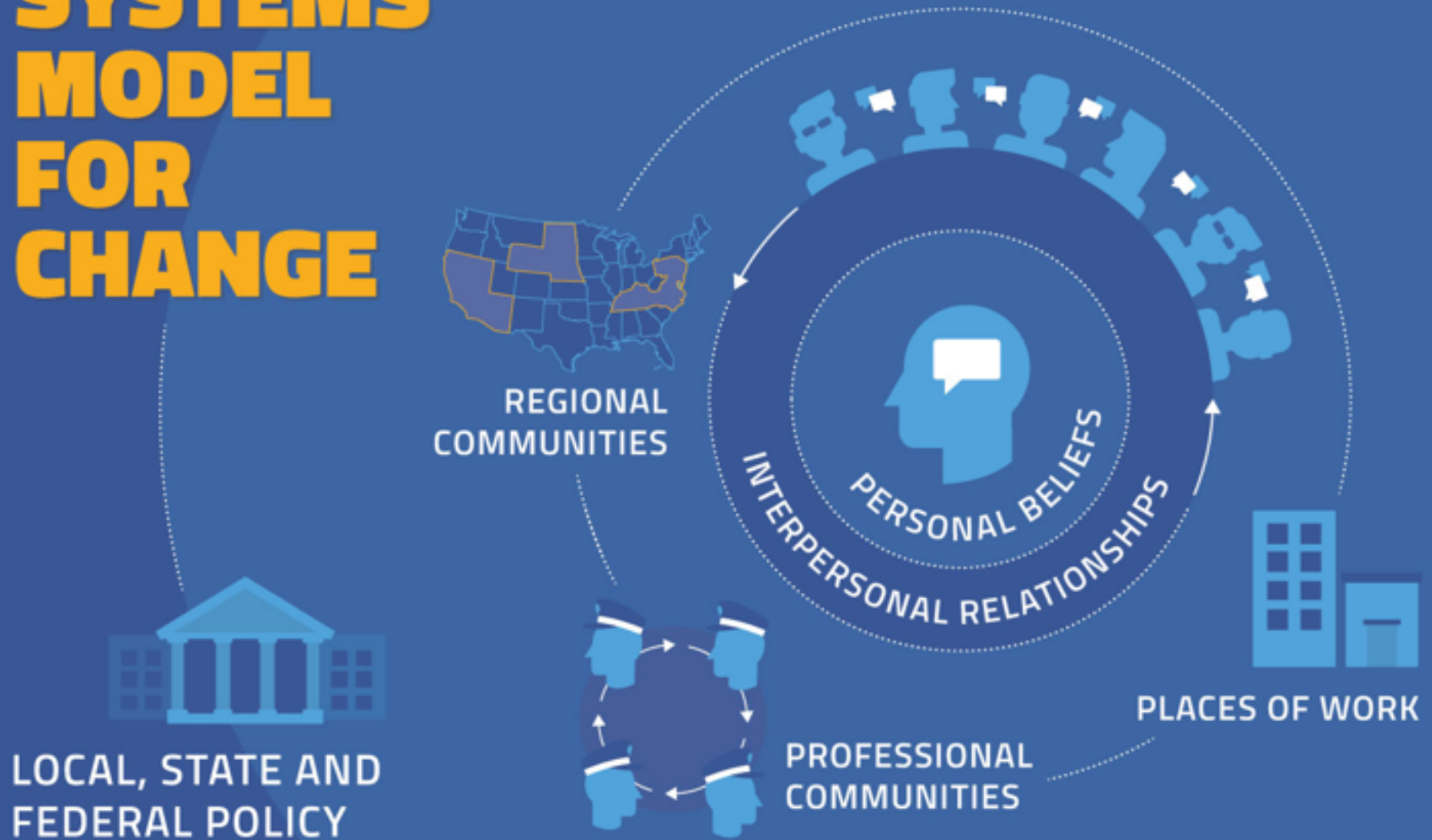


The Grand Challenge

SYSTEMS MODEL FOR CHANGE



Drawn from the work of Kenneth R. McLeroy, PhD, et al. "An Ecological Perspective on Health Promotion Programs" 1988
THIS IMAGE BY SETH KAHAN IS LICENSED UNDER A CREATIVE COMMONS ATTRIBUTION 4.0 INTERNATIONAL LICENSE.

Seth@VisionaryLeadership.com